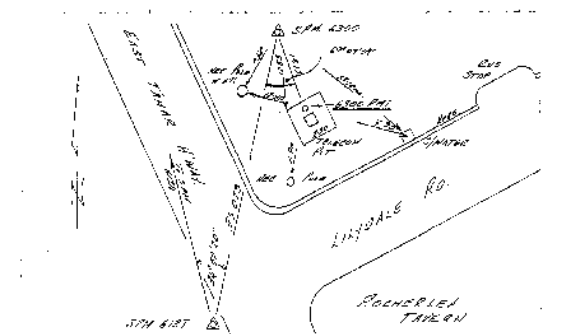
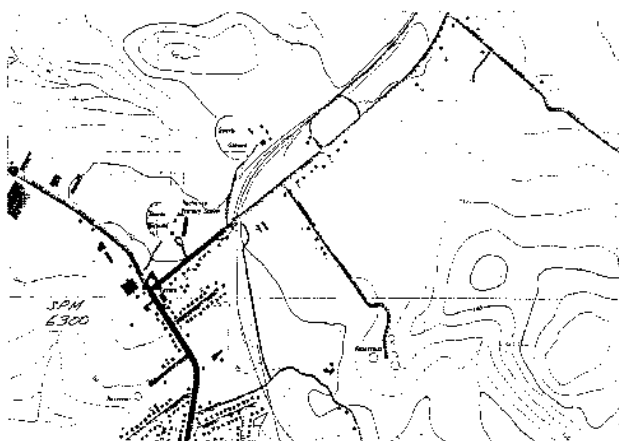


Station Name			Station Location			Station Number
ROCHERLEA			At SPM 6300 – Cnr East Tamar Hwy & Lilydale Rd , Rocherlea			9000
STATION INFORMATION						MARK DETAIL
Coordinate	510475.18E	5419043.94N	m	Datum	AMG Z55-AGD66	
Elevation		97.356	m	Datum	AHD83 (Tas)	
Gravity		980279.38	mGals	Datum	ISO GAL65	
Station Type	Gravity Base					
Estab. By	Closed network of ABABA ties for gravity					
Gravity	Integrated Mapping Technologies P/L			Date	November,2007	



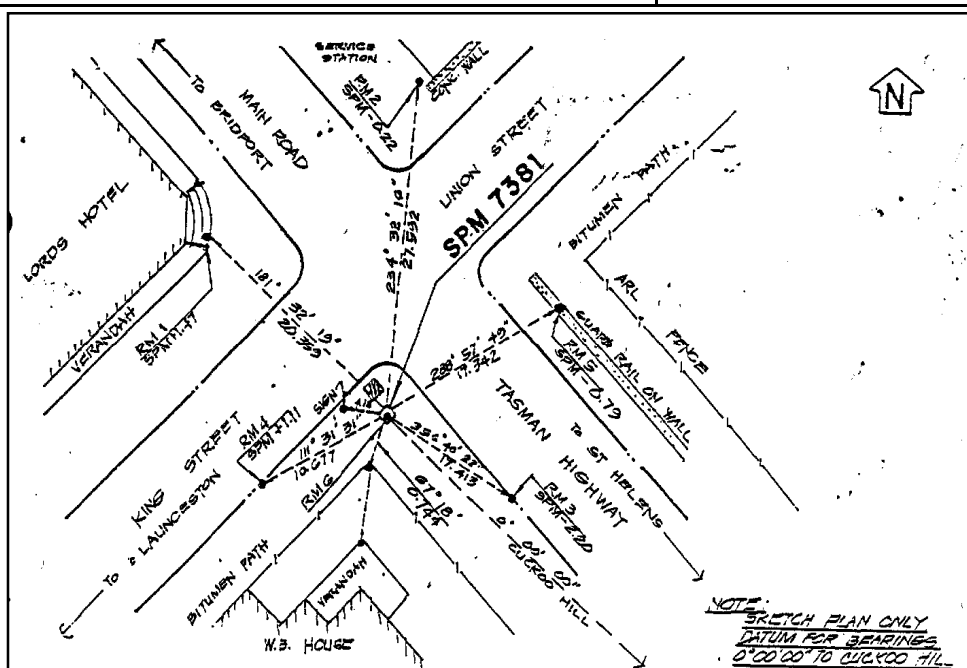
Survey recovery sketch extracted  
from the Survey Control Site  
Summary website of the  
Department of Primary Industries

SCDR UID : 40372J      SUMMARY Date: 07 AUG 1996      APPROVED: *[Signature]*

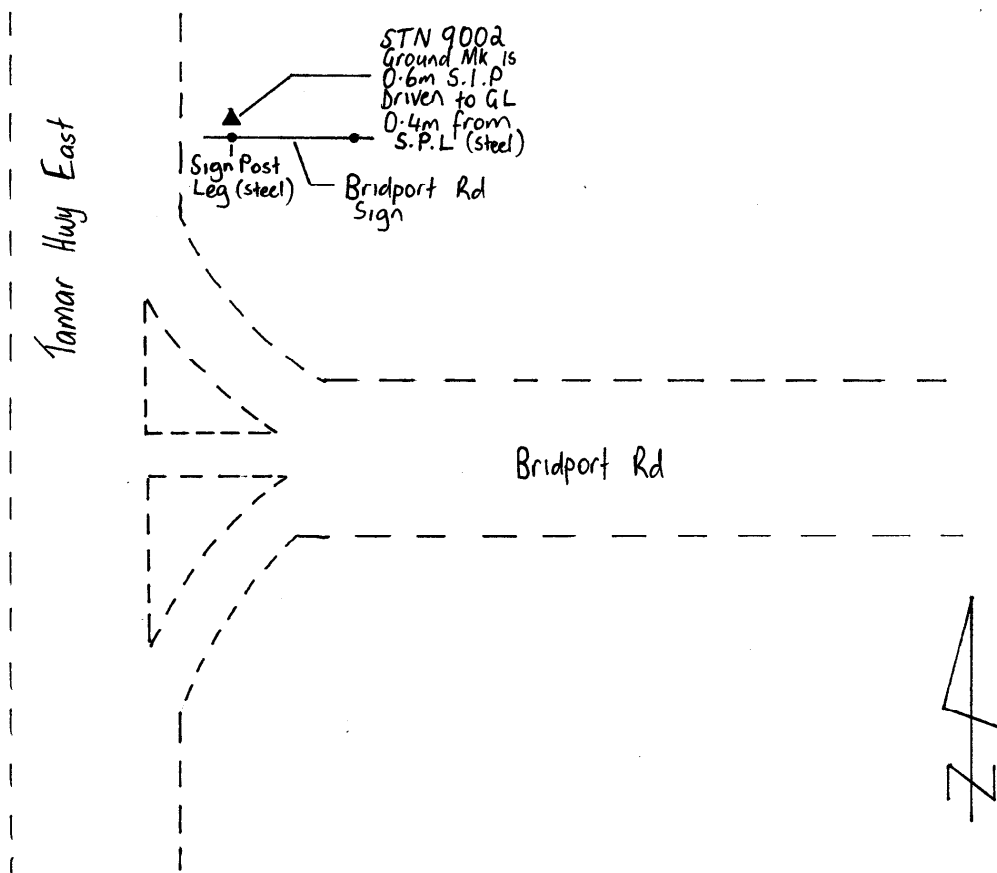


Station Name				Station Location			Station Number
SCOTTSDALE				Int of Tasman Hwy and King St, Scottsdale			9001
STATION INFORMATION						MARK DETAIL	
Coordinate	543411.49E	5443209.28N	m	Datum	AMG Z55-AGD66		
Elevation		193.634	m	Datum	AHD83 (Tas)		
Gravity		980238.93	mGals	Datum	ISOGAL65		
Station Type	Gravity Base						Gravity Base Station located at SPM 7381. Base is at ground level adjacent to the SPM
Estab. By	Closed network of ABABA ties for gravity						
Gravity Obs	Integrated Mapping Technologies P/L			Date	November, 2007		
Mark Desc'n	Brass mushroom SPM in concrete.Top is just under level of bitumen footpath						

Recovery sketch copied from the Dept of Primary Industries & Water – Information & Land Management Division – Survey Control Site Summary Web Site

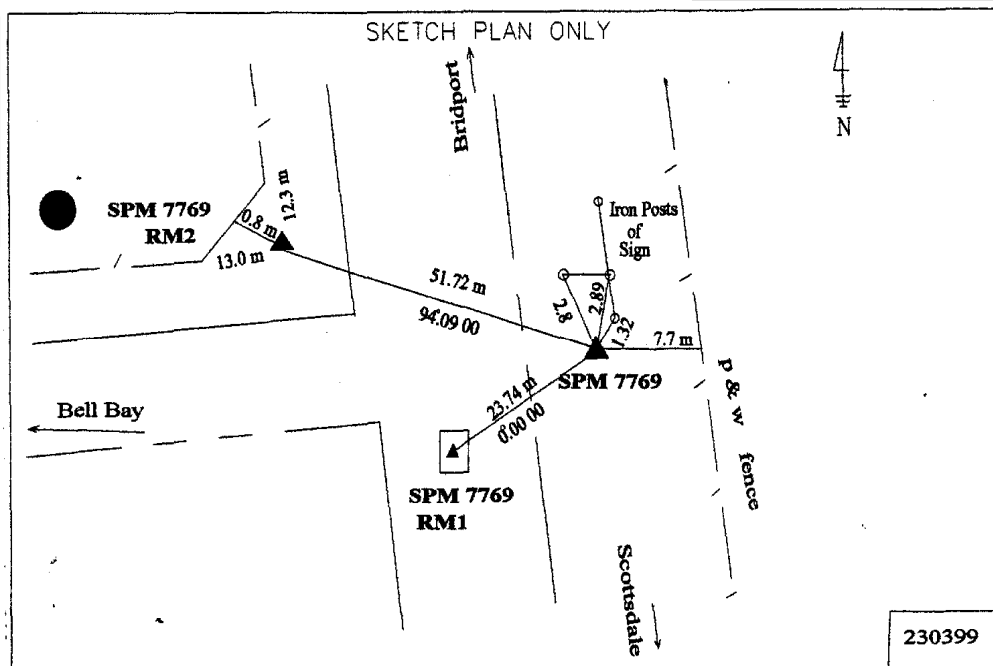


Station Name				Station Location				Station Number	
GEORGE TOWN				Int Tamar Hwy & Bridport Rd, George Town				9002	
STATION INFORMATION						MARK DETAIL			
Coordinate	489693.77E	5447728.07N	m	Datum	AMG Z55-AGD66				
Elevation		46.828	m	Datum	AHD83 (Tas)				
Gravity		980268.77	mGals	Datum	ISOGAL65				
Station Type	Combined GPS Reference and Gravity Base								
Estab. By	AUSPOS for Position, ABABA tie for gravity								
Placed By	Integrated Mapping Technologies P/L			Date	05/12/07				
Mark Desc'n	60cm SIP deep driven to ground level with 1.5m SIP witness post adjacent to fence corner								

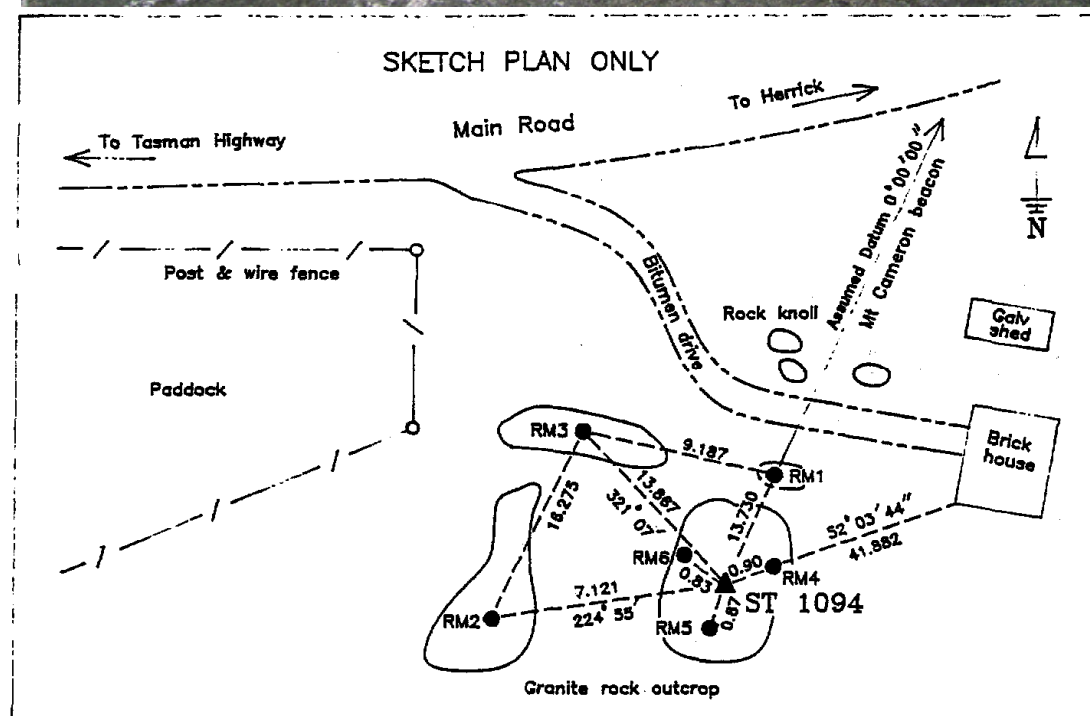


Station Name			Station Location			Station Number	
BRIDPORT			Bridport Rd, Bridport opposite road to Bells Bay			9003	
STATION INFORMATION						MARK DETAIL	
Coordinate	533789.69E	5458932.97N	m	Datum	AMG Z55-AGD66	Gravity Base Station is at ground level next to SPM 7769	
Elevation		15.190	m	Datum	AHD83 (Tas)		
Gravity		980274.70	mGals	Datum	ISOGAL65		
Station Type	Gravity Base						
Estab. By	Interconnected network of ABABA ties						
Placed By	Integrated Mapping Technologies P/L			Date	23/02/2008		
Mark Desc'n	Brass Lands disc in concrete core 0.20m below GL.						

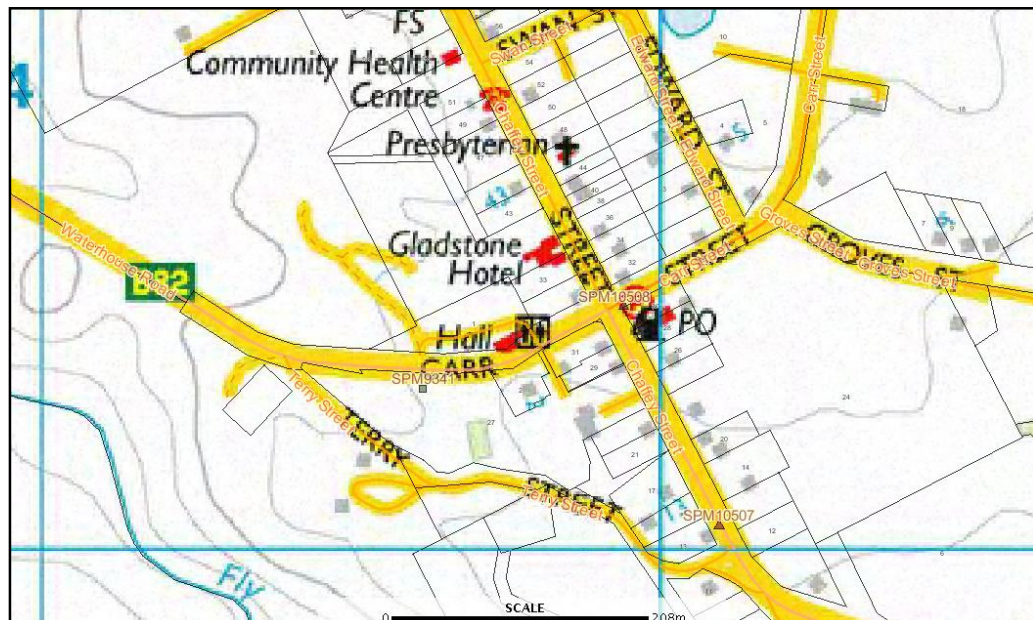
Recovery sketch and photo copied from the Dept of Primary Industries & Water – Information & Land Management Division – Survey Control Site Summary Web Site



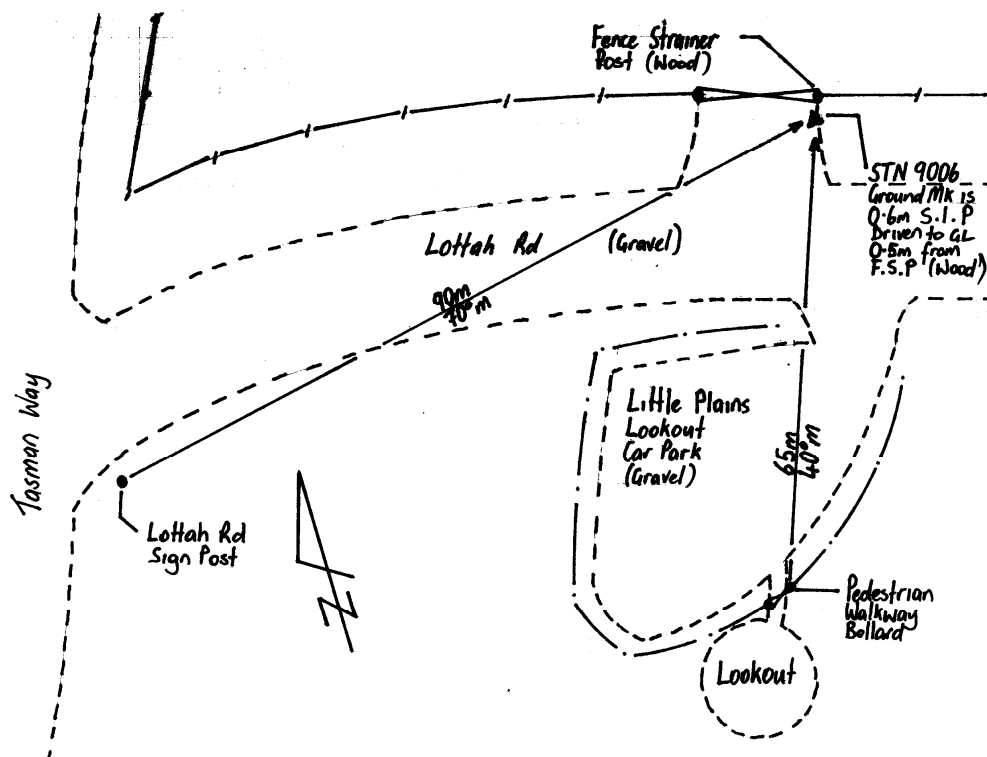
Station Name			Station Location			Station Number
HERRICK			On Main Rd between Herrick and Tasman Hwy			9004
STATION INFORMATION						MARK DETAIL
Coordinate	573501.794E	5448496.536N	m	Datum	AMG Z55-AGD66	On property named "Kosinook", approx 100m Sth of Gladstone Rd and 650m North East of junction of Gladstone Road and Tasman Hwy
Elevation		151.088	m	Datum	AHD83 (Tas)	
Gravity		980244.75	mGals	Datum	ISOGAL65	
Station Type	Gravity Base					
Estab. By	Interconnected ABABA ties for gravity 3rd Order Levelling. 3 <sup>rd</sup> Order Differential GPS					
Placed By	Integrated Mapping Technologies P/L			Date	23/02/2008	
Mark Desc'n	Gravity base adjacent to stainless steel pin in rock with bronze plaque					



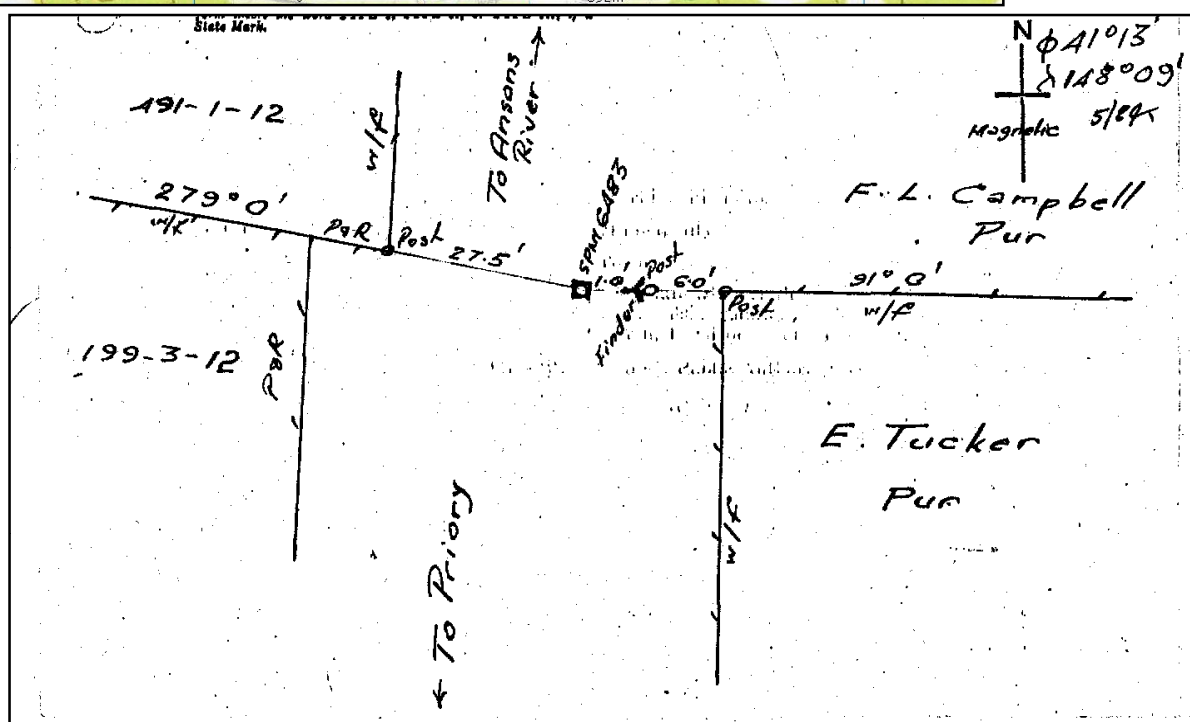
Station Name			Station Location			Station Number
GLADSTONE			Cnr Carr & Chaffey Streets, Gladstone			9005
STATION INFORMATION						MARK DETAIL
Coordinate	584859..192E	5465012.611N	m	Datum	AMG Z55-AGD66	SPM 10508 – Gravity Base station at ground level on nature strip adjacent to survey mark.
Elevation		66.783	m	Datum	AHD83 (Tas)	
Gravity		980264.46	mGals	Datum	ISO GAL65	
Station Type	Gravity Base					
Estab. By	Interconnected ABABA ties for gravity, 3 <sup>rd</sup> Order GPS Hgt and Coordinate					
Placed By	Integrated Mapping Technologies P/L		Date	23/02/2008		
Mark Desc'n	Bronze SPM disc set in concrete kerb outside Gladstone General Store					



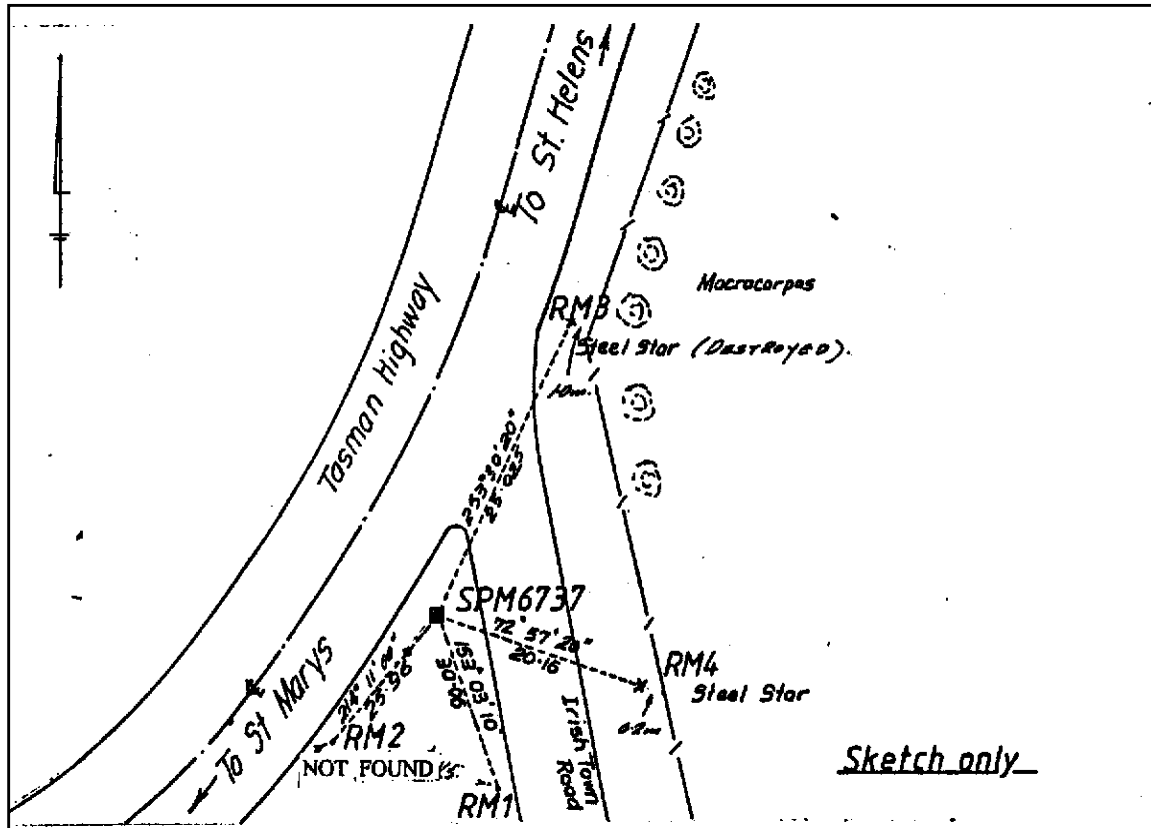
Station Name				Station Location				Station Number	
LITTLE PLAINS LOOKOUT				Lottah Rd nr Tasman Hwy				9006	
STATION INFORMATION						MARK DETAIL			
Coordinate	580296E	5435484N	m	Datum	AMG Z55-AGD66				NOTE:- Coordinates and elevation determined AUTONOMOUS GPS
Elevation		600	m	Datum	AHD83 (Tas)				
Gravity		980264.46	mGals	Datum	ISOGAL65				
Station Type	Gravity Base								
Estab. By	Closed network of ABABA ties for gravity								
Placed By	Integrated Mapping Technologies P/L			Date	November 2007				
Mark Desc'n	1.5m SIP post adjacent to gate post opposite entrance to Little Plains Lookout car park.								



Station Name			Station Location				Station Number
ANSONS BAY			Ansons Bay Road				9007
STATION INFORMATION						MARK DETAIL	
Coordinate	597650E	5441490N	m	Datum	AMG Z55-AGD66		At SPM 6483 - Brass mushroom in concrete block on road between Priory and Ansons River 14.3 kms North of Georges River. Gravity at ground level.
Elevation		119.589	m	Datum	AHD83 (Tas)		
Gravity		980284.24	mGals	Datum	ISOGAL65		
Station Type	Gravity Base						
Estab. By	Scaled Position, interconnected and closed ABABA ties for gravity and 3rd Order levelling						
Placed By	Integrated Mapping Technologies P/L			Date	Gravity - Nov 2007		
Mark Desc'n	60cm SIP deep driven to ground level with 1.5m SIP witness post adjacent to fence corner						



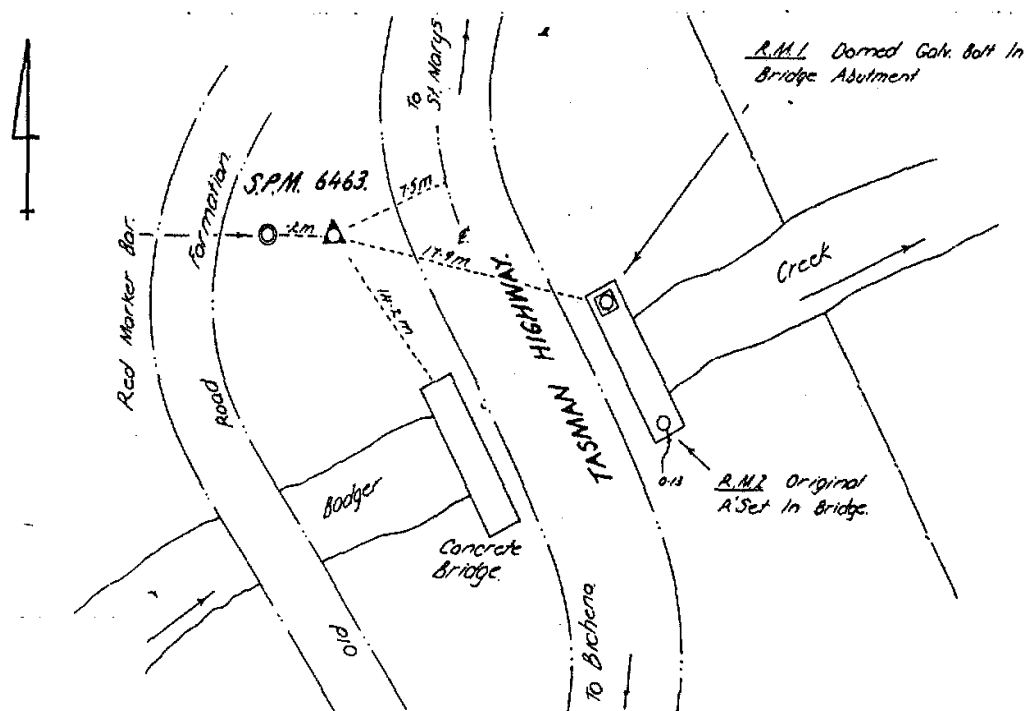
Station Name				Station Location				Station Number	
ST MARYS				Int Tasman Hwy and Irish Town Road, St Mary's				9008	
STATION INFORMATION						MARK DETAIL			
Coordinate	599631.537E	5396314.252	m	Datum	AMG Z55-AGD66	SPM 6737 RM1			
Elevation		270.233	m	Datum	AHD83 (Tas)				
Gravity		980280.20	mGals	Datum	ISOGAL65				
Station Type	Gravity Base at Existing SPM								
Estab. By	Interconnected ABABA tie for gravity, 3 <sup>rd</sup> Order leveling, 3 <sup>rd</sup> Order GPS coordinates.								
Gravity By	Integrated Mapping Technologies P/L			Date	November 2007				
Mark Desc'n	Brass disc in concrete – disk knocked off. Gravity base at ground level adjacent to mark.								



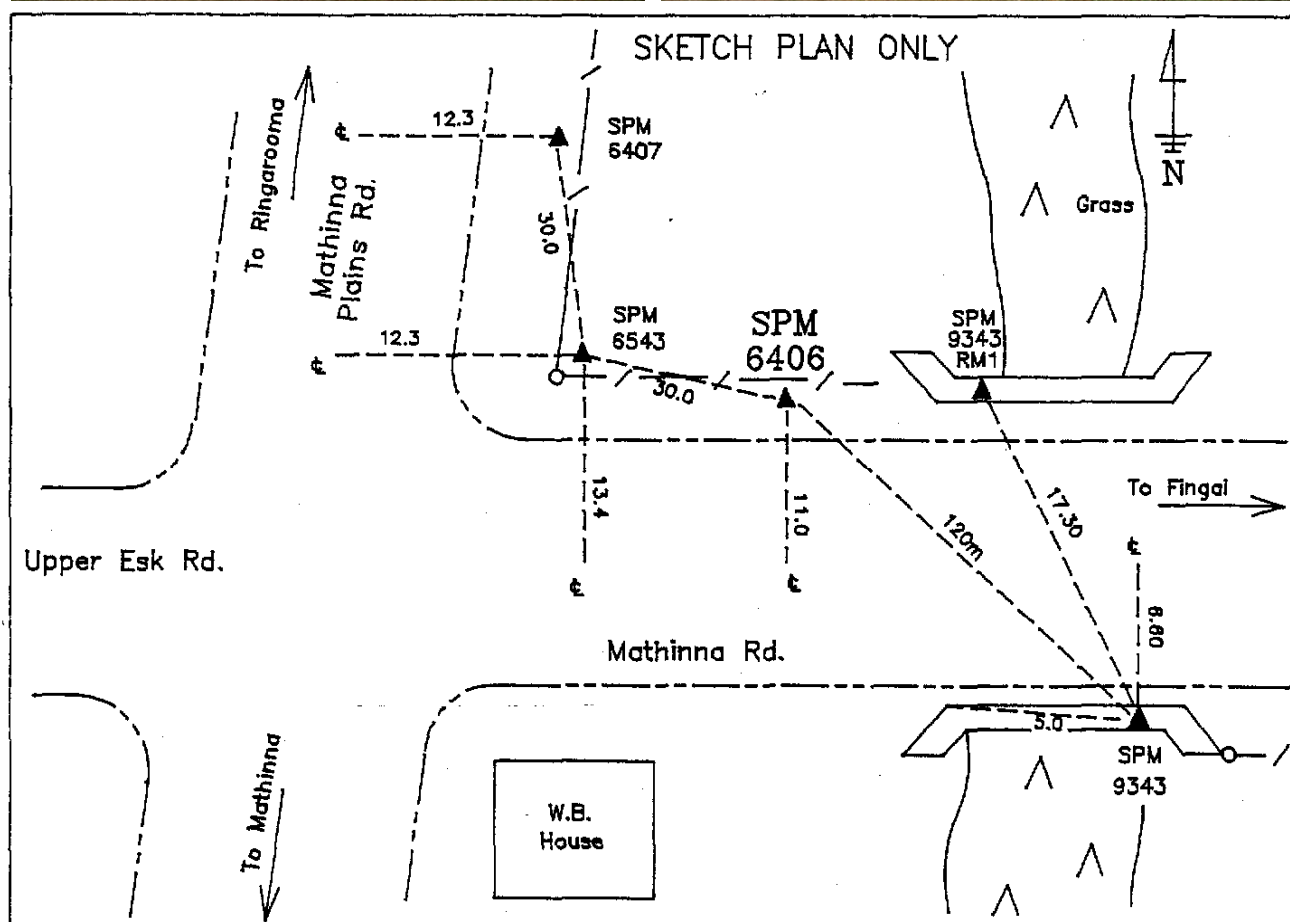
Station Name				Station Location				Station Number	
AVOCA				Int Falmouth and Arthur Streets, Avoca				9009	
STATION INFORMATION						MARK DETAIL			
Coordinate	559886.880E	5374074.315	m	Datum	AMG Z55-AGD66				
Elevation		212.295	m	Datum	AHD83 (Tas)				
Gravity		980268.77	mGals	Datum	ISOGAL65				
Station Type	Gravity Base							SPM 10222 – Bronze disc in concrete pit. Nth corner of the intersection of Falmouth and Arthur Streets, Avoca.	
Estab. By	Interconnected ABABA ties for gravity, 3 <sup>rd</sup> Order GPS Hgt and Coordinates								
Placed By	Integrated Mapping Technologies P/L			Date	23/02/2008				
Mark Desc'n	Ground level adjacent to SPM 10222								



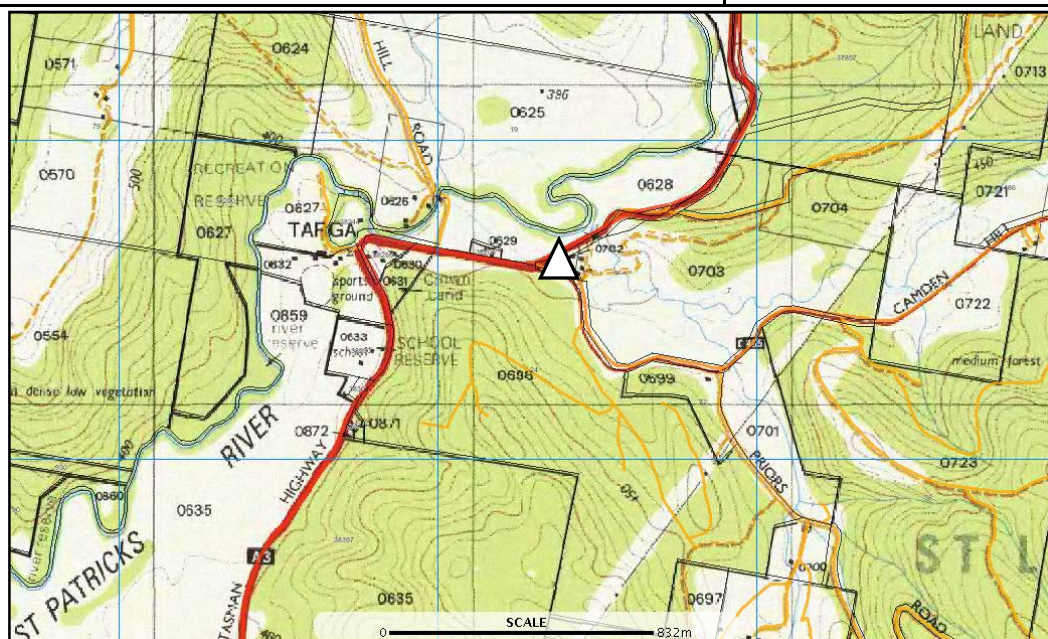
Station Name			Station Location				Station Number
BICHENO			Tasman Hwy,				9011
STATION INFORMATION						MARK DETAIL	
Coordinate	604065.26E	5367487.453N	m	Datum	AMG Z55-AGD66	Gravity Base is at ground level adjacent to <b>SPM6463</b> . Mark is on West side of Hwy approx 20m of Badger Ck and 6.5km Sth of Douglas River	
Elevation		2.664	m	Datum	AHD83 (Tas)		
Gravity		980347.98	mGals	Datum	ISOGAL65		
Station Type	Gravity Base at existing SPM						
Estab. By	Interconnected ABABA gravity ties, 3 <sup>rd</sup> Order Levelling, 3 <sup>rd</sup> Order GPS Coordinates						
Placed By	Integrated Mapping Technologies P/L			Date	November, 2007		
Mark Desc'n	Brass mushroom in concrete block approx 20cm below ground level.						



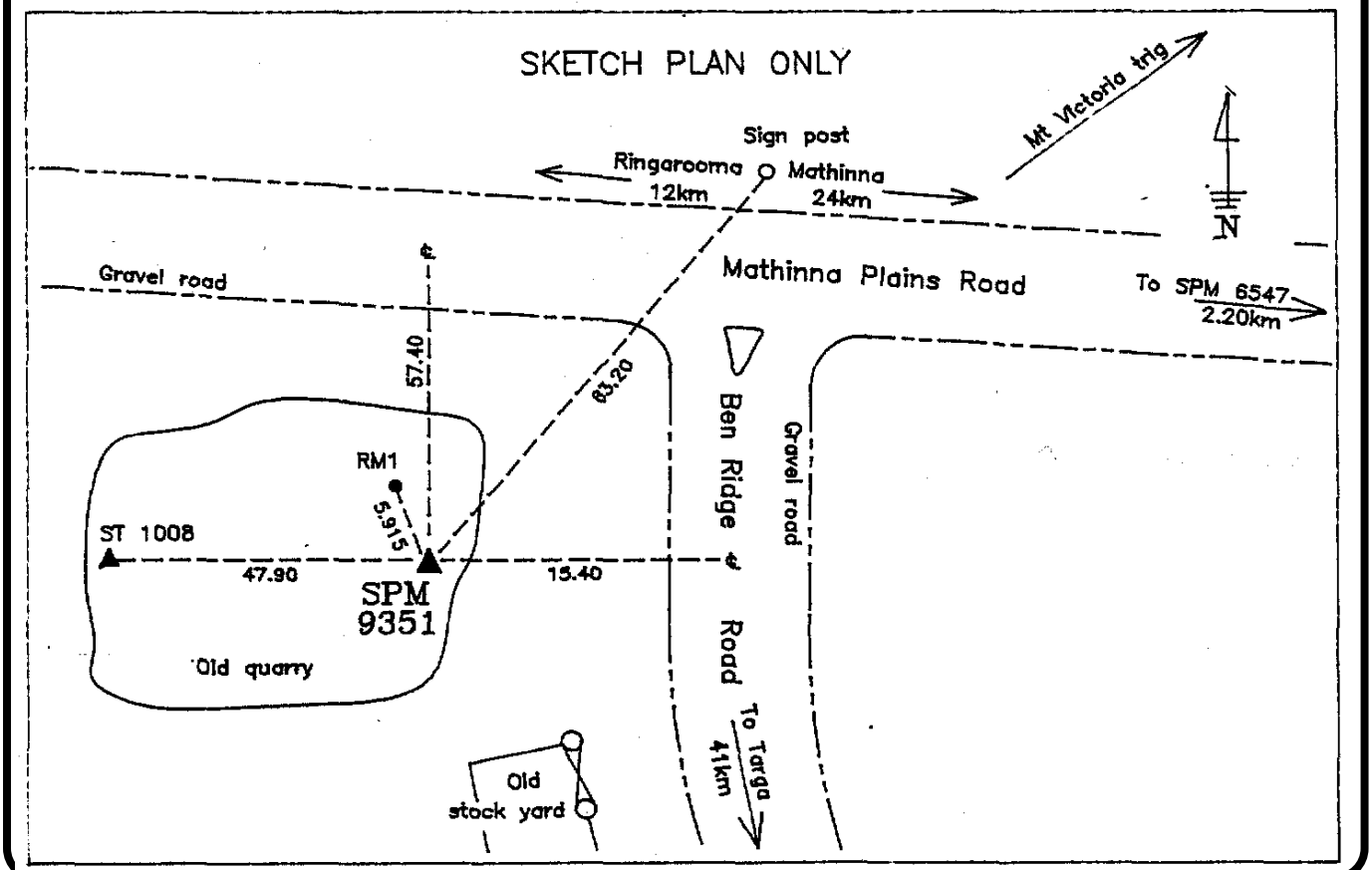
Station Name			Station Location				Station Number	
MATHINNA			Int Mathinna, Mathinna Plains and Esk Rds, Mathinna				9012	
STATION INFORMATION						MARK DETAIL		
Coordinate	574330E	5408550N	m	Datum	AMG Z55-AGD66			
Elevation		285.388	m	Datum	AHD83 (Tas)			
Gravity		980251.82	mGals	Datum	ISOGAL65			
Station Type	Bench Mark and Gravity Base						Gravity Stn is at ground level adjacent to SPM 6406	
Estab. By	ABABA tie for gravity, #rd Order Hgt, scaled XY							
Placed By	Integrated Mapping Technologies P/L			Date	4/12/2007			
Mark Desc'n	Brass mushroom in concrete with SIP witness post							



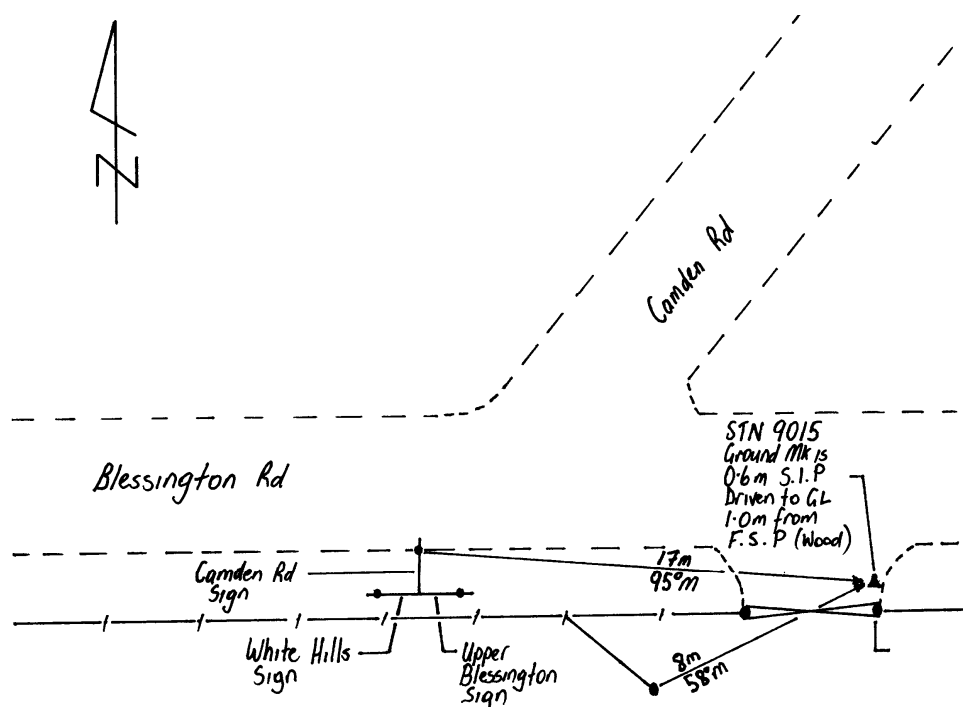
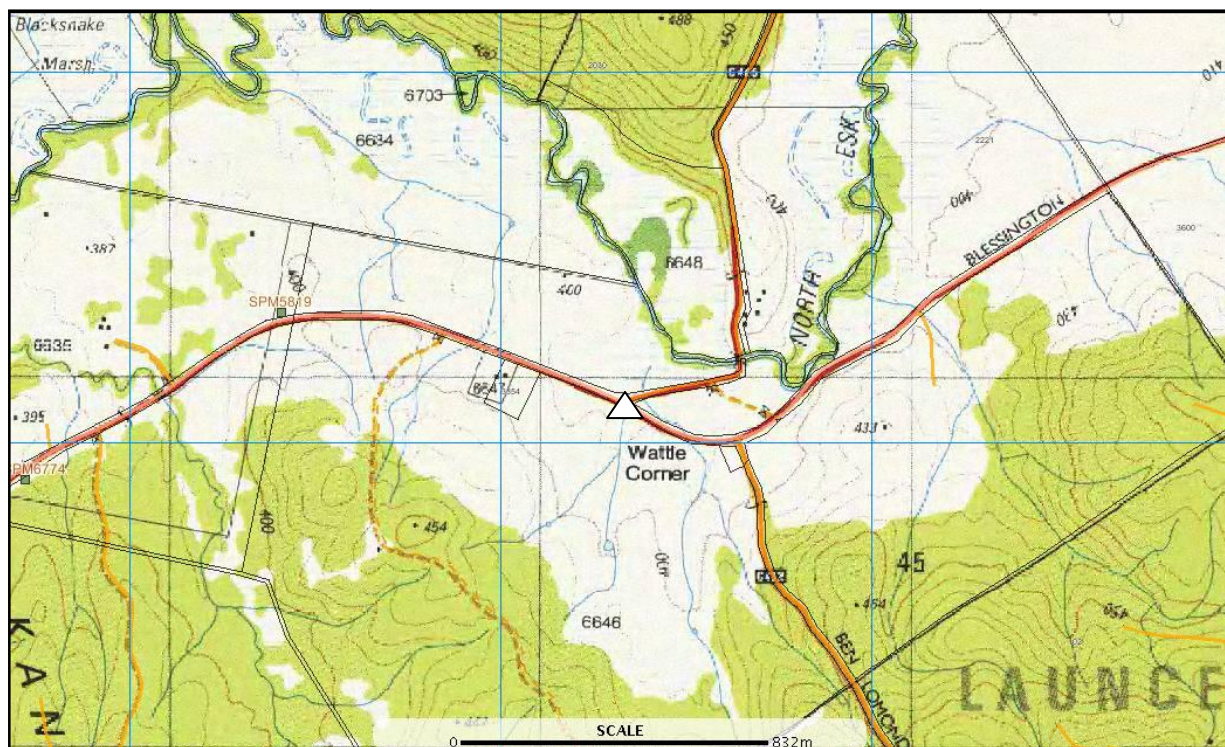
Station Name				Station Location				Station Number	
TARGA				Int Tasman Hwy and Camden Hill Rd (C405)				9013	
STATION INFORMATION							MARK DETAIL		
Coordinate	531309.57E	5426472.17N	m	Datum	AMG Z55-AGD66				
Elevation		395.948	m	Datum	AHD83 (Tas)				
Gravity		980216.48	mGals	Datum	ISOGAL65				
Station Type	Combined GPS Reference and Gravity Base								
Estab. By	AUSPOS for Position, closed network of ABABA tie for gravity								
Placed By	Integrated Mapping Technologies P/L			Date	23/02/2008				
Mark Desc'n	60cm SIP deep driven to ground level with 1.5m SIP witness post adjacent to fence corner								



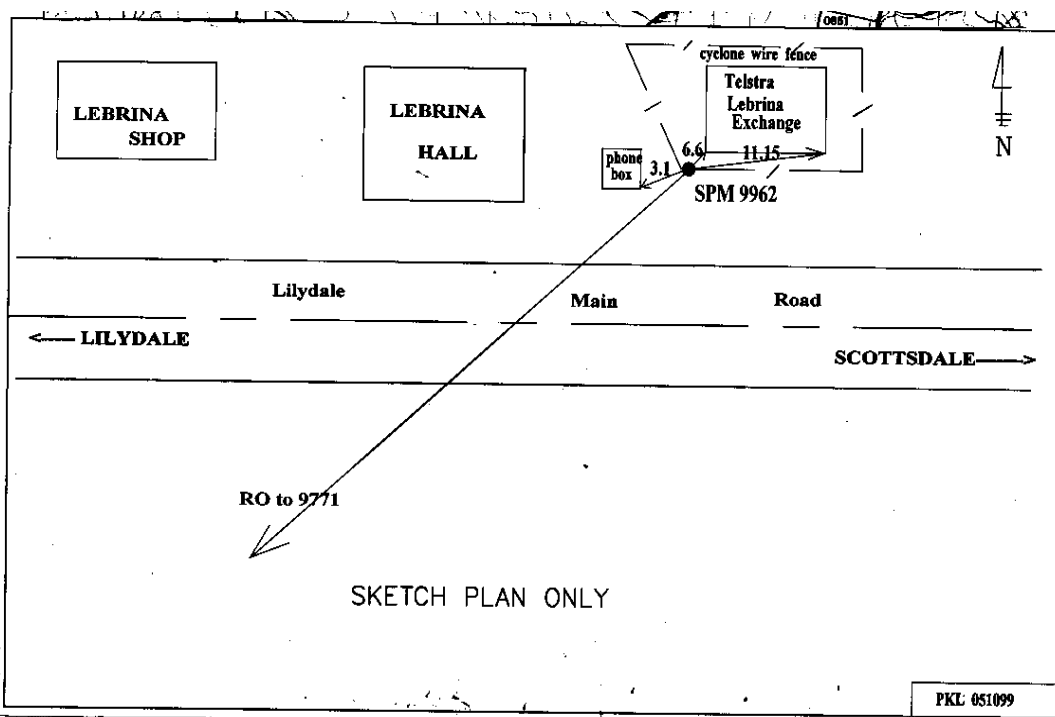
Station Name			Station Location				Station Number
BEN RIDGE			Int Mathinna Plains and Ben Ridge Rd				9014
STATION INFORMATION						MARK DETAIL	
Coordinate	563680N	5423870N	m	Datum	AMG Z55-AGD66		
Elevation		815.525	m	Datum	AHD83 (Tas)		
Gravity		980125.11	mGals	Datum	ISO GAL65		
Station Type	Gravity Base at existing SPM						Gravity Base is at ground level adjacent to <b>SPM 9351</b> at edge of borrow pit
Estab. By	Interconnected ABABA tie for gravity, 3 <sup>rd</sup> Order leveled, coords scaled						
Placed By	Integrated Mapping Technologies P/L			Date	November,2007		
Mark Desc'n	Brass Lands disc inrock						



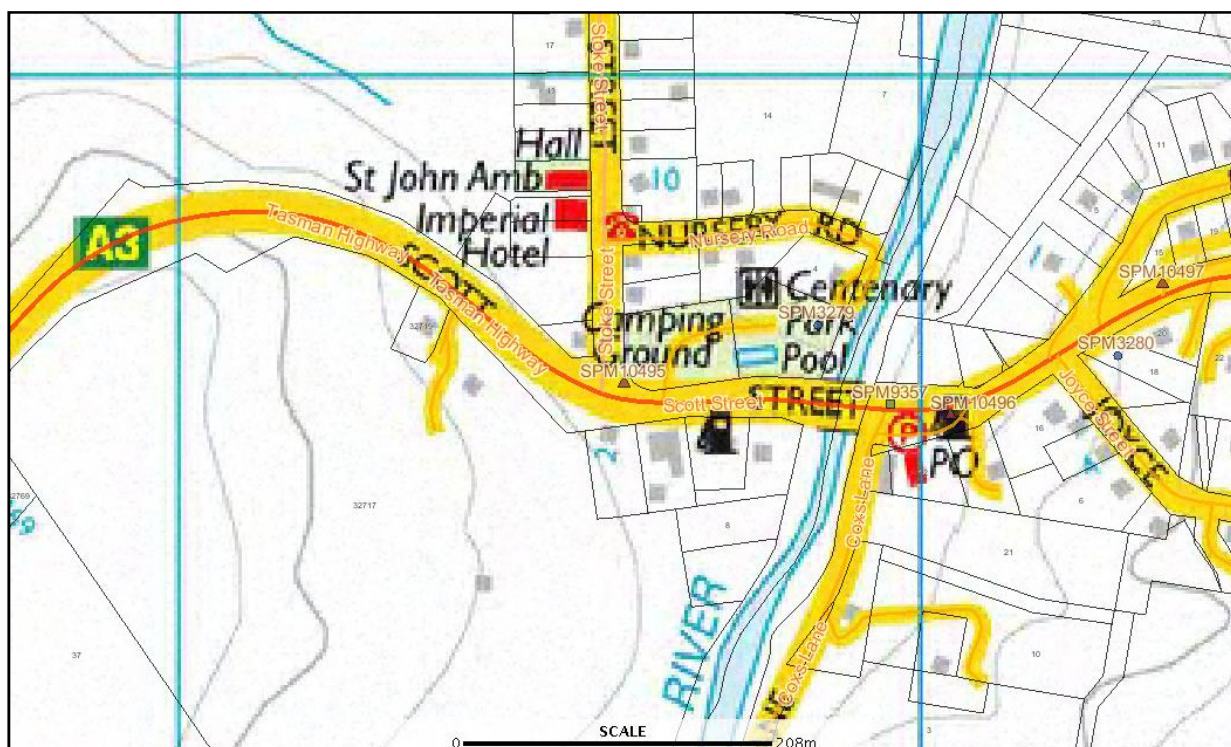
Station Name			Station Location				Station Number
UPPER BLESSINGTON			Intersection of Camden and Upper Blessington Roads				9015
STATION INFORMATION						MARK DETAIL	
Coordinate	544336.307E	5408095.904N	m	Datum	AMG Z55-AGD66	NOTE:- Station position and elevation are the average of 3 AUSPOS determinations each based on 9-10hrs of data	
Elevation		386.468	m	Datum	AHD83 (Tas)		
Gravity		980226.08	mGals	Datum	ISOGAL65		
Station Type	GPS Reference and Gravity Base Station						
Estab. By	AUSPOS & closed network of ABABA ties for gravity						
Placed By	Integrated Mapping Technologies P/L			Date	November,2007		
Mark Desc'n	60cm SIP with 1.5m SIP witness post adjacent to gate post.						



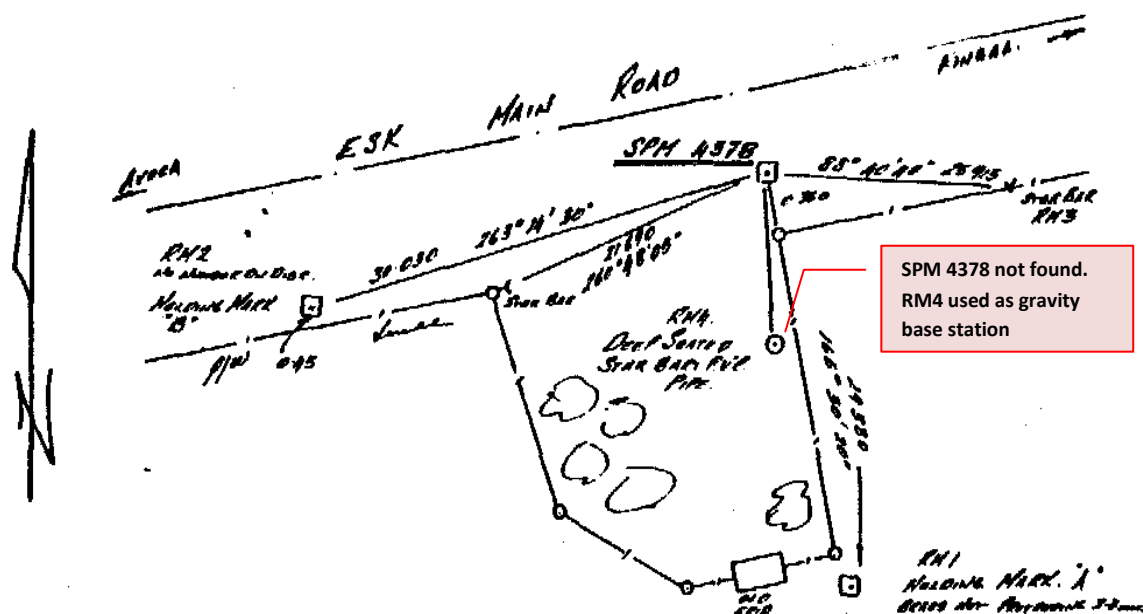
Station Name			Station Location				Station Number
LEBRINA			Golconda Road, Lebrina				9500
STATION INFORMATION						MARK DETAIL	
Coordinate	518986.576E	5441357.886N	m	Datum	AMG Z55-AGD66		
Elevation		206.388	m	Datum	AHD83 (Tas)		
Gravity		980245.53	mGals	Datum	ISOGAL65		
Station Type	Gravity Base at SPM						Gravity base is at ground level adjacent to <b>SPM 9962</b> .
Estab. By	Interconnected ABABA gravity ties, 3 <sup>rd</sup> Order GPS hgt and coordinates						
Placed By	Integrated Mapping Technologies P/L			Date	23/02/2008		
Mark Desc'n	Bronze SPM disc in concrete footing outside Lebrina Telstra Exchange on Golconda Rd, Lebrina.						



Station Name			Station Location				Station Number	
BRANXHOLM			Int Tasman Hwy and Stoke St, Branhholm				9501	
STATION INFORMATION						MARK DETAIL		
Coordinate	561688.214E	5442110.535N	m	Datum	AMG Z55-AGD66			
Elevation		175.008	m	Datum	AHD83 (Tas)			
Gravity		980238.96	mGals	Datum	ISOGAL65			
Station Type	Gravity Base at SPM							Gravity Base is at ground level on concrete footpath adjacent to <b>SPM 10495</b>
Estab. By	Interconnected ABABA ties for gravity, 3 <sup>rd</sup> Order GPS Coordinates and Height							
Placed By	Integrated Mapping Technologies P/L			Date	November, 2007			
Mark Desc'n	Bronze SPM disc in concrete kerb							



Station Name				Station Location				Station Number	
FINGAL				Int Tamar Hwy & Bridport Rd, George Town				9502	
STATION INFORMATION						MARK DETAIL			
Coordinate	578027.075E	5388805.926N	m	Datum	AMG Z55-AGD66				Gravity base is at ground level adjacent to <b>SPM 4378 RM4</b>
Elevation		235.947	m	Datum	AHD83 (Tas)				
Gravity		980279.11	mGals	Datum	ISOGAL65				
Station Type	Gravity Base at existing SPM								
Estab. By	Interconnecting ABABA gravity ties, 3rd Order leveled, 3rd Order GPS Coordinates.								
Placed By	Integrated Mapping Technologies P/L			Date	23/02/2008				
Mark Desc'n	Deep seated star bar in PVC pipe with concreted collar.								

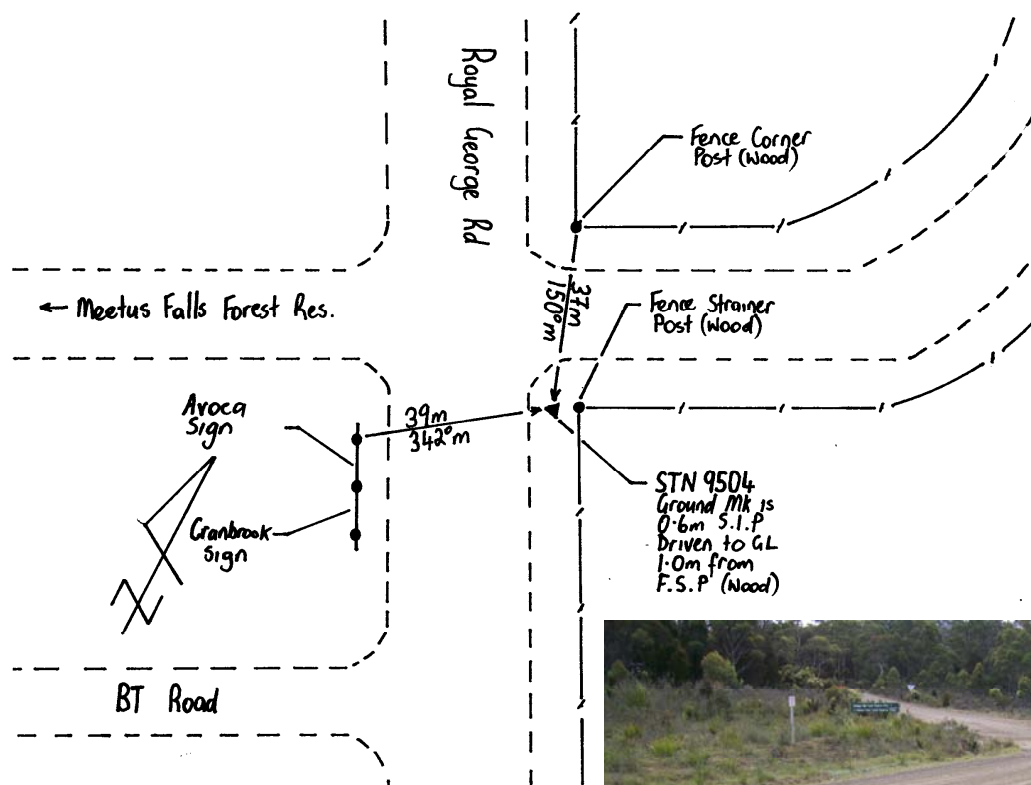


Station Name			Station Location				Station Number	
SCAMANDER			Scamander Ave, Scamander				9503	
STATION INFORMATION						MARK DETAIL		
Coordinate	605402.008E	5408923.570N	m	Datum	AMG Z55-AGD66			
Elevation		7.165	m	Datum	AHD83 (Tas)			
Gravity		980324.36	mGals	Datum	ISOGAL65			
Station Type	Gravity Base						Gravity Base Station is at ground level on concrete footpath adjacent to <b>SPM 10153</b>	
Estab. By	Interconnected ABABA gravity ties, 3 <sup>rd</sup> Order GPS Hgt and coordinates							
Placed By	Integrated Mapping Technologies P/L			Date	November, 2007			
Mark Desc'n	Bronze SPM disc set in concrete kerb opposite Scamander Beach Hotel, Scamander Ave, Scamander.							

Gravity Base Station is at ground level on concrete footpath adjacent to **SPM 10153**



Station Name			Station Location				Station Number
REYNOLDS HILL			Royal George Rd, Int with Meetus Falls and Harding Falls Forest Roads – 32km from Avoca				9504
STATION INFORMATION						MARK DETAIL	
Coordinate	584561E	5364725N	m	Datum	AMG Z55-AGD66	NOTE:_ Station coordinates and elevation determined by autonomous GPS positioning.	
Elevation		298	m	Datum	AHD83 (Tas)		
Gravity		980291.90	mGals	Datum	ISOGAL65		
Station Type	Gravity Base						
Estab. By	Closed Network of ABABA ties for gravity						
Placed By	Integrated Mapping Technologies P/L			Date	November,2007		
Mark Desc'n	1.5m SIP witness post adjacent to fence corner						



Station Name			Station Location				Station Number
NILE			Int Nile & Deddington Rds, Nile				9505
STATION INFORMATION						MARK DETAIL	
Coordinate	527667E	5388320N	m	Datum	AMG Z55-AGD66		
Elevation		190	m	Datum	AHD83 (Tas)		
Gravity		980283.46	mGals	Datum	ISOGAL65		
Station Type	Gravity Base Station – Not Coordinated						
Estab. By	Autonomous GPS, ABABA ties						
Placed By	Integrated Mapping Technologies P/L			Date	3/12/07		
Mark Desc'n	60cm SIP deep driven to ground level with 1.5m SIP witness post adjacent to fence corner						

